



One Kronos Drive, Glendale Heights Illinois 60139

FINISHED PRODUCT SPECIFICATION

Effective Date: 10/08/2014

Revised By: Nancy Zuniga

Document: Research and Development

Program: Specification Program

Location: K/Finished Product Specification/Bakery

Item Name: Pocket Pita 6" Original

Item Number: 002220

Formula Number: PURCHASE ITEM



FINAL WEIGHT PER CRUST			
	2.5 oz	71 g	
FINISHED CRUST DIMENSIONS			
	MINIMUM	TARGET	MAXIMUM
WEIGHT (oz)	2.40	2.50	2.6
LENGTH (in.)	6.00	6.25	6.50
WIDTH (in.)	N/A	N/A	N/A
HEIGHT (in.)	N/A	N/A	N/A

ITEM DESCRIPTION

Flavor: Typical Baked Flavor
Color: Fully Baked with Toast Points on Top and Bottom
Texture: Firm, Moist and Tender

ITEM PACKAGING

Primary Packaging:	Printed	Primary Labe Type:	Printed box
No. of Pieces / Bag:	10 Pitas	No. of Bags / Case:	12 count bags
No. of Pieces / Case:	120 Pitas	Case Gross Wt. (lbs):	20.00 lbs
Cases Per Pallet:	49 cases	Case Gross Wt. (kg):	9.07 kg
Rows Per Pallet (Hi):	7 High	Case Net Wt. (lbs):	18.75 lbs
Cases Per Row (Ti):	7 Per Layer	Case Net Wt. (kg):	8.50 kg
Case Dimensions:	19.563 x 13.563 x 10.750 in	Cases Cube (Cu. Ft.):	1.65 Cu. Ft.
UPC Code Number:	0 77589 40220 4	USDA Est. #::	N/A

STORAGE & SHELF LIFE & CODE DATE FORMAT

Storage Conditions:	FROZEN (0°F)	Distributed:	10°F or Less
Shelf Life from Production:	Frozen (0°F): 9 Months (270 days) Refrigerated (40°F): 14 Days Ambient (70°F): 7 Days	Code Date Format:	Kwik Lok: 150011 Example: 15 (Year) 001 (Julian Date) 1 (Line#) Master Case: 15001101 Example: 15 (Year) 001 (Julian Date) 1 (Line#) 01 (Military Hour)

Certified Kosher
YES

Certified Halal
NO

Certified Organic
NO

Certified CN
NO



INGREDIENT STATEMENT

INGREDIENTS

ENRICHED WHEAT FLOUR [CONTAINS NIACIN, REDUCED IRON, THIAMINE MONONITRATE (VITAMIN B1), RIBOFLAVIN (VITAMIN B2), FOLIC ACID], WATER, YEAST, CONTAINS LESS THAN 2% OF EACH OF THE FOLLOWING: SUGAR, SALT, CALCIUM PROPIONATE (ADDED TO MAINTAIN FRESHNESS).

CONTAINS: WHEAT

Approved By: *Nick Spondike*



One Kronos Drive, Glendale Heights Illinois 60139

FINISHED PRODUCT SPECIFICATION

Effective Date: 10/08/2014

Document: Research and Development

Revised By: Nancy Zuniga

Program: Specification Program

Location: K/Finished Product Specification/Bakery

NUTRITIONALS PER SERVING SIZE

Recommend Serving Size: 1 Pita - 2.5 oz. (71 g)

Nutrition Facts	
Serving Size 1 Pocket 2.5 oz (71g)	
Servings Per Container 10/Bag	
Amount Per Serving	
Calories 195	Calories from Fat 10
% Daily Value*	
Total Fat 1g	2%
Saturated Fat 0g	0%
Trans Fat 0g	
Cholesterol 0mg	0%
Sodium 295mg	12%
Total Carbohydrate 39g	13%
Dietary Fiber 2g	9%
Sugars 3g	
Protein 7g	
Vitamin A 0%	• Vitamin C 0%
Calcium 5%	• Iron 30%
*Percent Daily Values are based on a 2,000 calorie diet. Your daily values may be higher or lower depending on your calorie needs:	
	Calories: 2,000 2,500
Total Fat	Less than 65g 80g
Saturated Fat	Less than 20g 25g
Cholesterol	Less than 300mg 300mg
Sodium	Less than 2,400mg 2,400mg
Total Carbohydrate	300g 375g
Dietary Fiber	25g 30g
Calories per gram:	
Fat 9 • Carbohydrate 4 • Protein 4	

ALLERGENS AND OTHER SENSITIVE INGREDIENTS

	Column I	Column II	Column III
ALLERGEN	Present in the Product	Present in other products manufactured on the same line	Present in the same manufacturing plant
Peanut	NO	NO	NO
Tree Nuts	NO	NO	NO
Milk and Dairy Products	NO	NO	NO
Eggs	NO	NO	NO
Fish	NO	NO	NO
Shellfish and Molluscs	NO	NO	NO
Soy	NO	NO	NO
Wheat	YES	YES	YES
Sulfites, e.g., sulfur dioxide and sodium metabisulfites, etc	NO	NO	NO
Monosodium Glutamate (MSG)	NO	NO	NO

Approved By: *Nick Spondike*

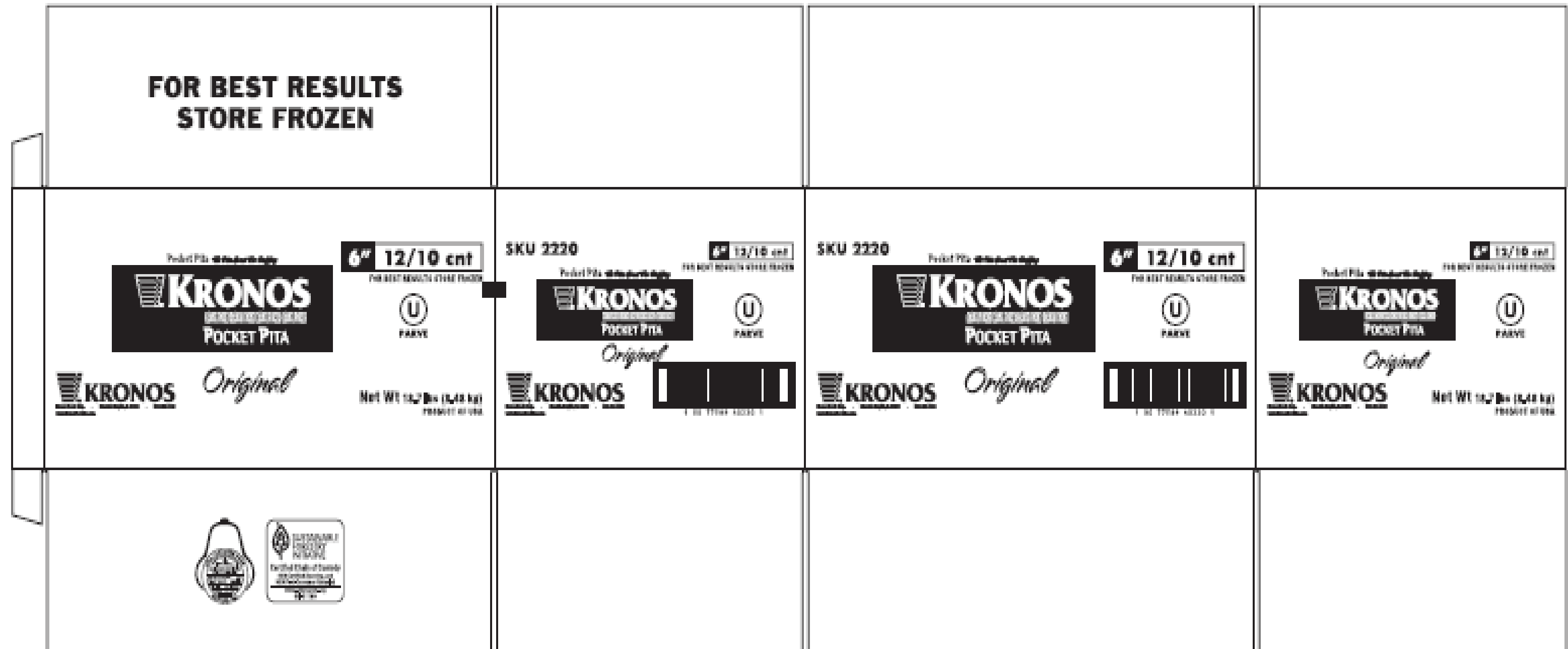
Effective Date: 10/08/2014

Document: Research and Development

Revised By: Nancy Zuniga

Program: Specification Program

Location: K/Finished Product Specification/Bakery

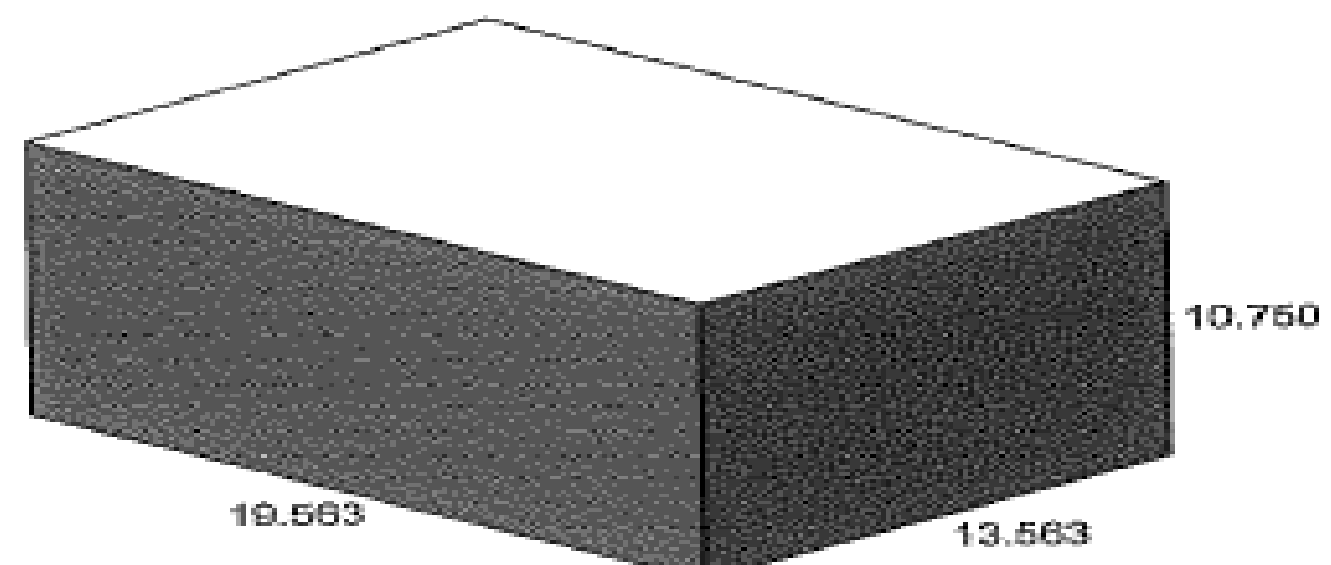
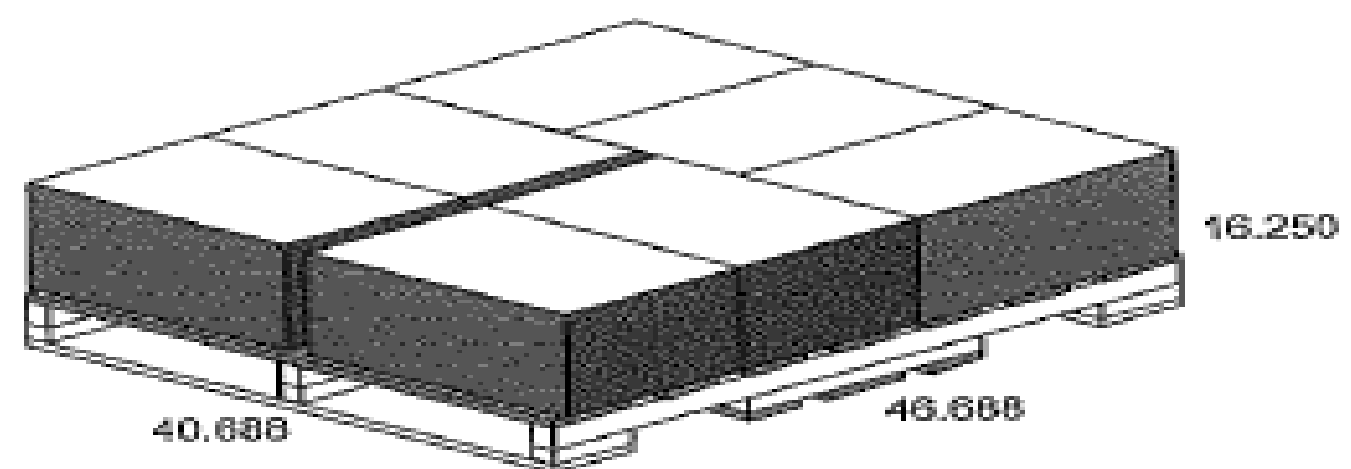
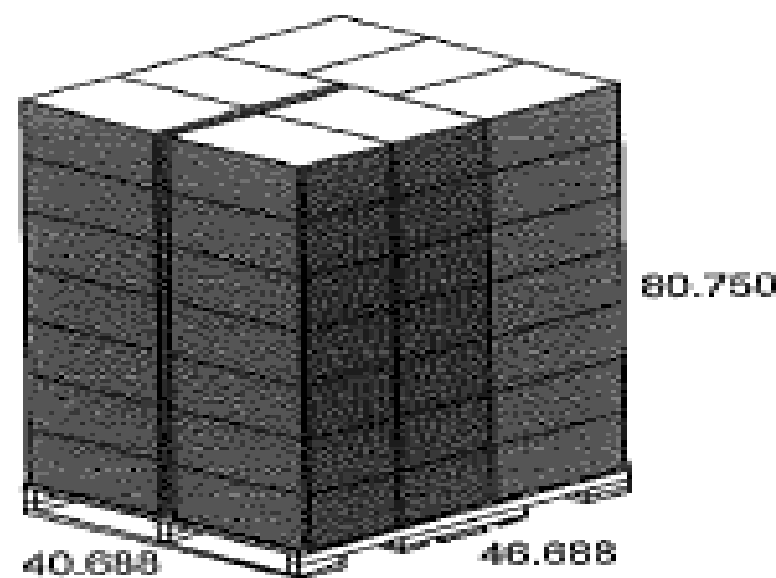
IN-HOUSE MASTER CASE

PALLET PATTERN / CASE DIMENSIONS

Friday, October 12, 2012

Product Name TOUFAYAN BAKERY
 Product Code 2222 KRONOS
 Datafile Name 2222 kronos (10/12/2012)
 Load Ref. 1 I
 Cube Used 88.2 %
 Area Used 96.7 %
 Pallet type 48x40

7 Case / Layer
 7 Layer / Load
 49 Case / Load

	Length	Width	Height	Net	Gross	Volume
Case (ID)	19.188	13.188	10.000 in	20.000	20.000 lb	1.46 cuft
Case (OD)	19.563	13.563	10.750 in	20.000	20.000 lb	1.65 cuft
Product	46.688	40.688	75.250 in	980.000	980.000 lb	82.72 cuft
Load	48.000	40.688	80.750 in	980.000	1030.000 lb	91.27 cuft
Overhang	-0.656	0.344	in			



CAPE PALLET LAYOUT
 Prepared By Bell Container Corp.

*** FOR PALLET PATTERN GUIDE ONLY ***

 Approved By: *Nick Spondike*